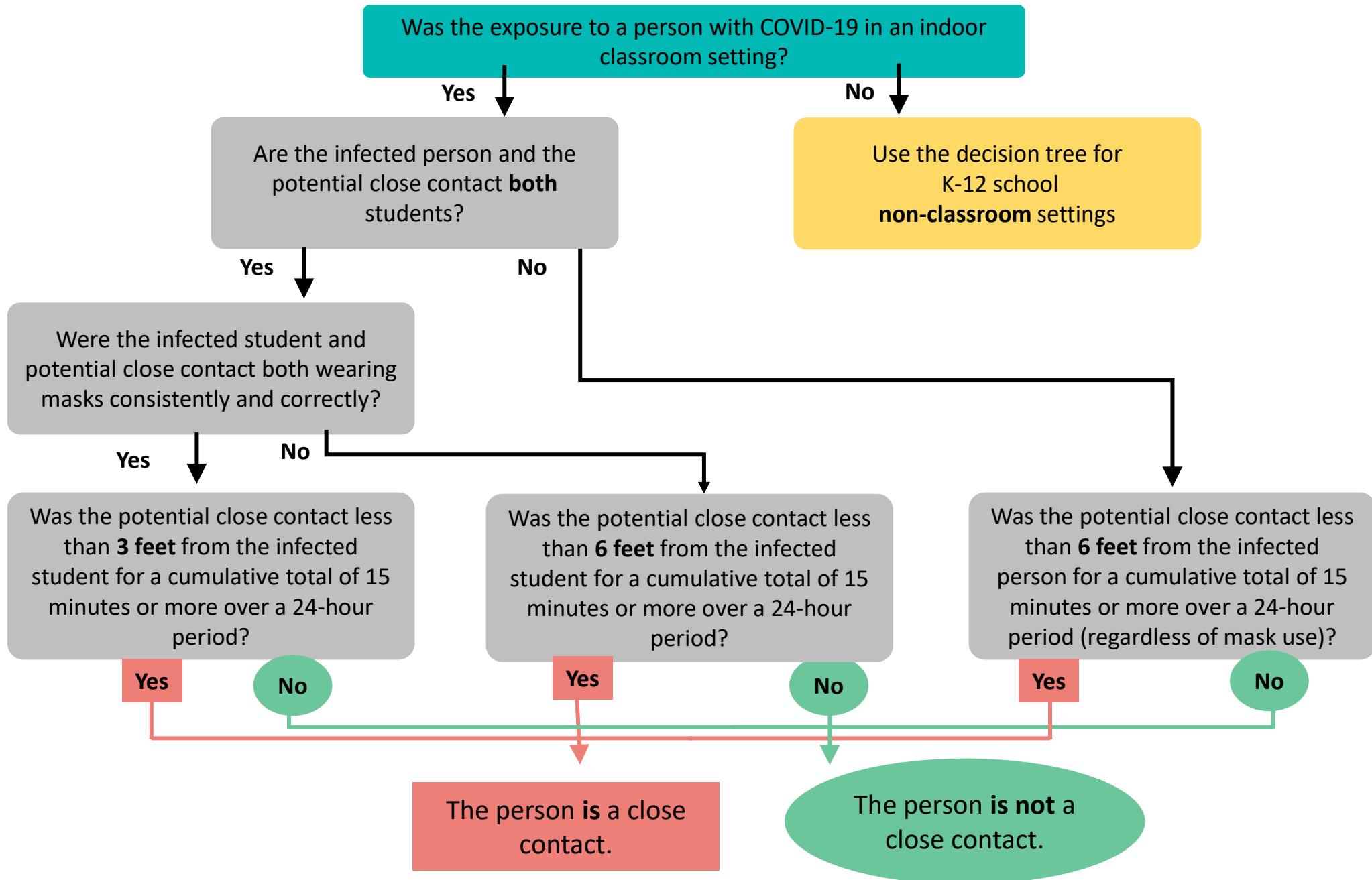


Decision Tree for Identifying COVID-19 Close Contacts in K-12 School INDOOR CLASSROOM Settings

Note: Complete this decision tree for students and adults in an indoor classroom setting who were within 6 feet of the infected person starting 2 days prior to symptom onset or positive test. If the infected person is not showing symptoms, use the date the test was collected.



Decision Tree for Identifying COVID-19 Close Contacts in K-12 School NON-CLASSROOM Settings

Note: Complete this decision tree for anyone in a non-classroom setting who was within 6 feet of the infected person starting 2 days prior to symptom onset or positive test. If the infected person is not showing symptoms, use the date the test was collected.

